



Hawthorn High School

Summary of Provisional 2014 GCSE Results

Summary of Provisional 2014 G.C.S.E. Results



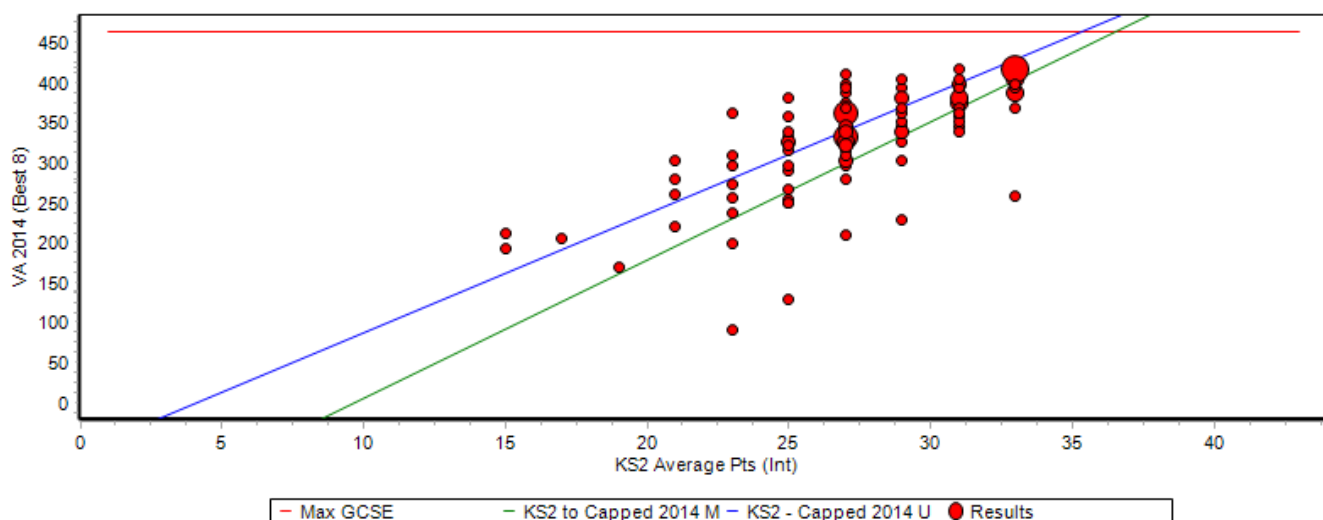
Cohort = 150
Number of girls = 72
Number of boys = 78



Headline Figures

- **82%** 5 or more GCSE equivalent A* - C passes.
- **76%** achieved 5 or more A*-C passes, including Maths and English, surpassing the target of 65%
- **99.3%** achieved 5 or more A*-G grades
- **90.6%** made expected progress in English
- **79.9%** made expected progress in Maths
- **20.7%** achieved the EBACC
- **28%** achieved 3 or more A*/ A grades
- **86.6%** achieved 1 or more A*/ B grades

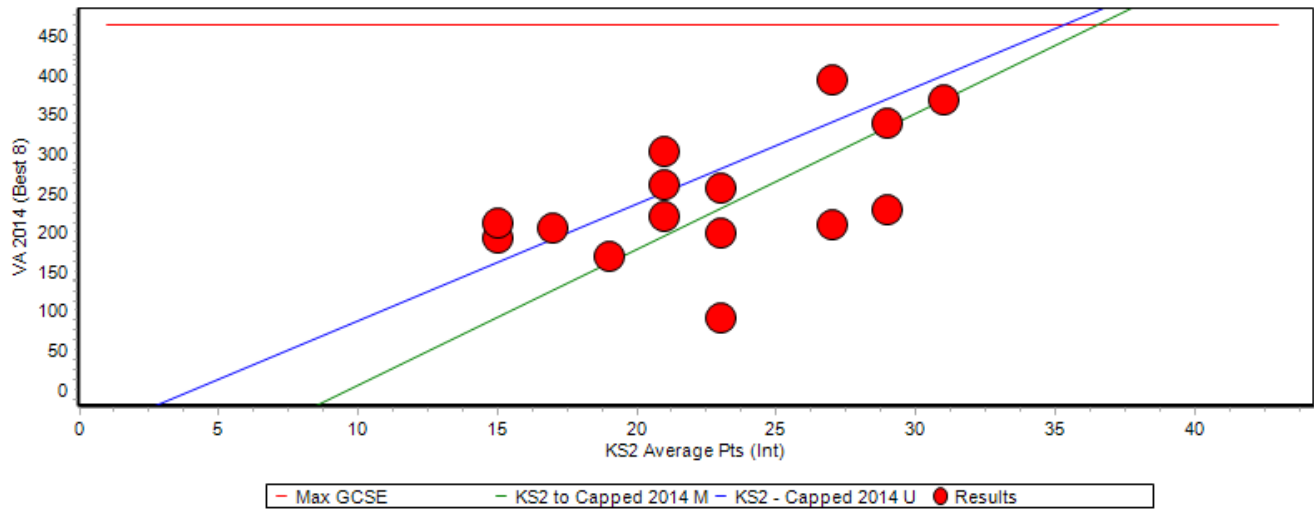
All Students



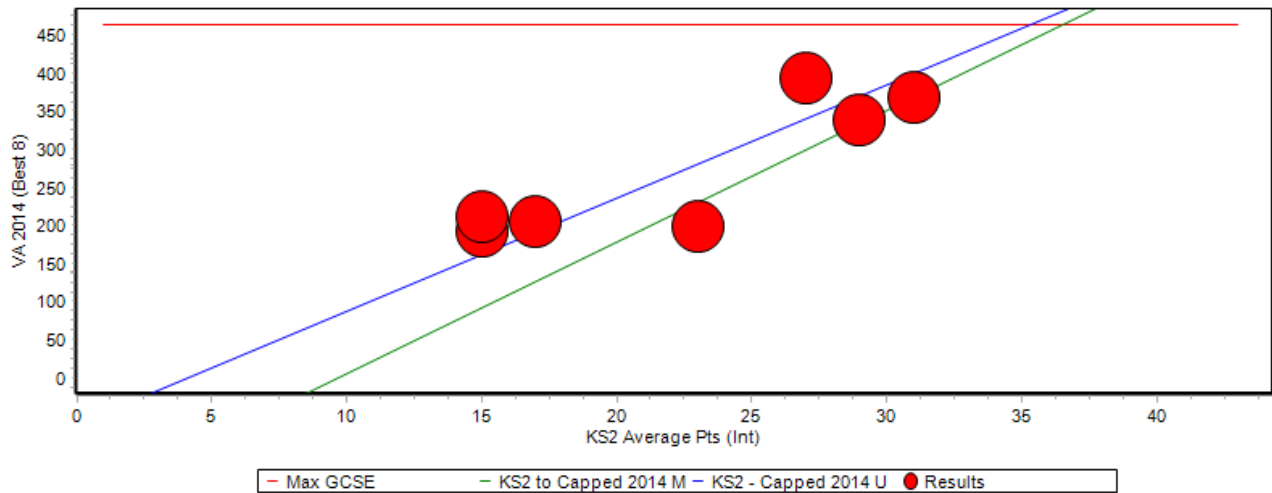
The **green** line shows median progress for all maintained schools and the **blue** shows upper quartile. The **red** line shows maximum possible points from GCSE qualifications.

SEN Students

There were 15 students (10%) on the SEN register with 20% of this cohort achieving 5A*-C including English and Maths.

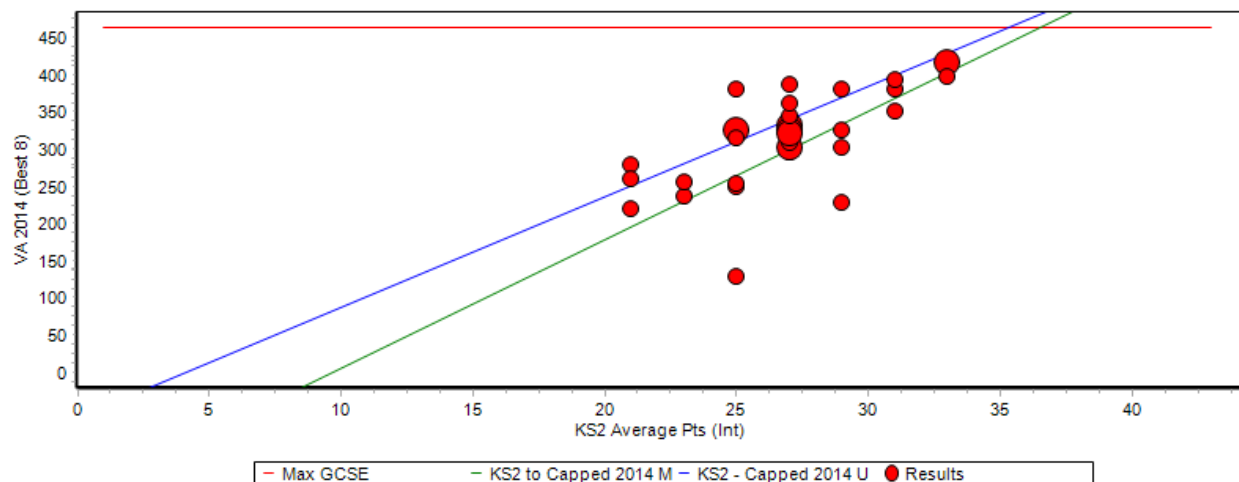


SEN with a Statement Cohort



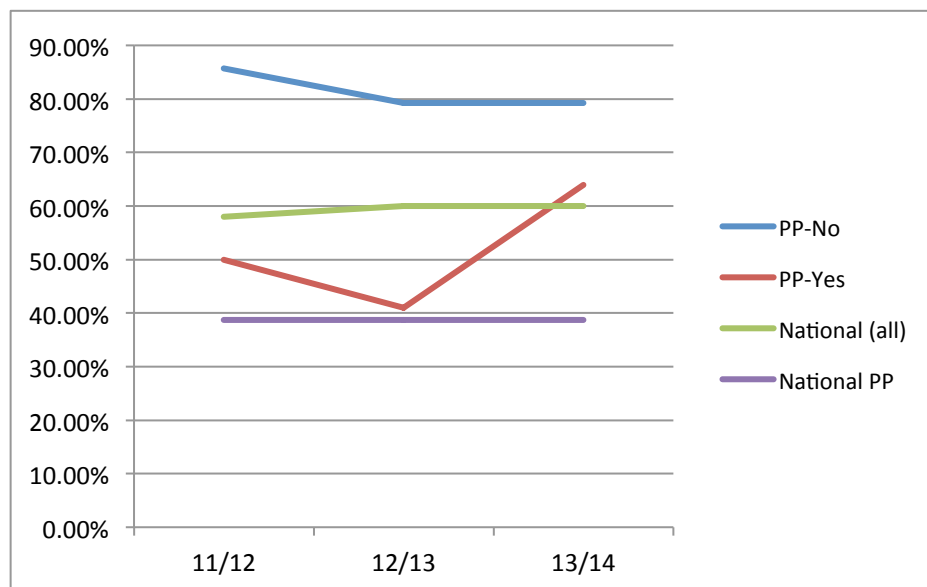
Pupil Premium Cohort

There were 35 (23%) students in the FSM cohort. The pupil premium measure identifies students who are either entitled to FSM or have been in the previous 6 years, are looked after or are from families within the armed forces.



‘Narrowing the Gap’

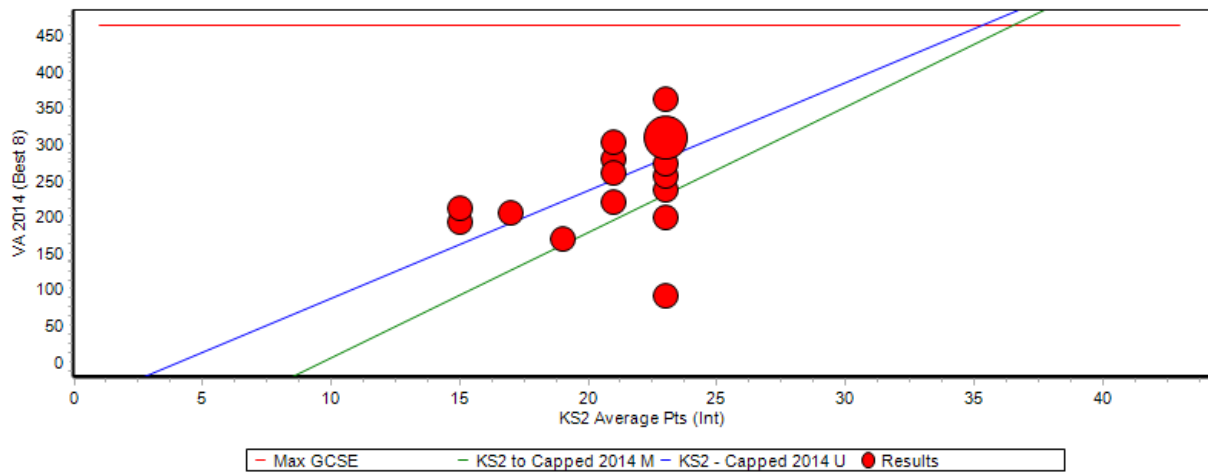
As part of the “Narrowing the Gap” agenda, performance of pupil premium students under particular scrutiny. The graph below shows the pupil premium trend compared to the national attainment of 5A*-C EM. The Pupil Premium “gap” is the difference between the red and blue lines.



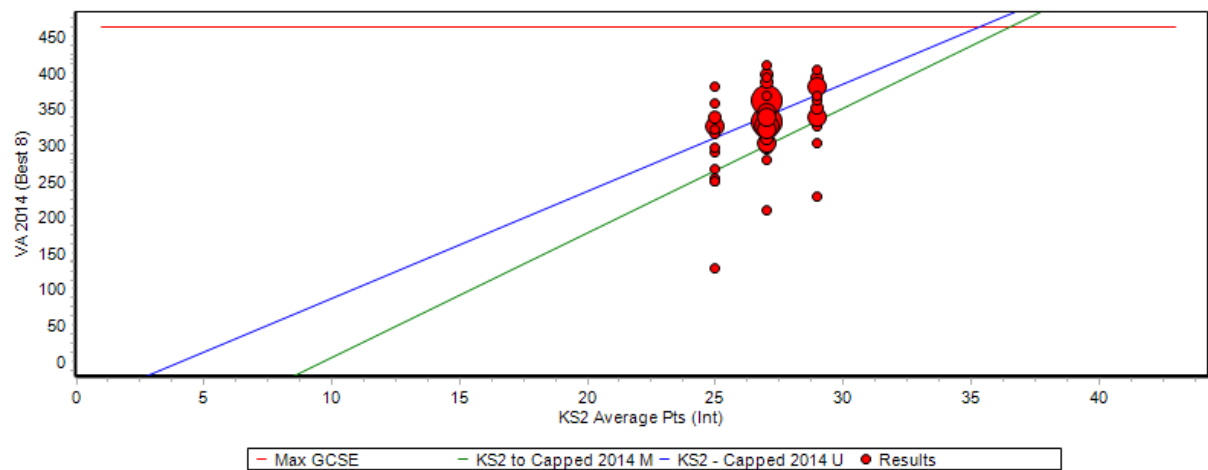
Attainment on entry

From 2011 onwards, the attainment band on entry (level 3, level 4 or level 5) has been included in performance tables:

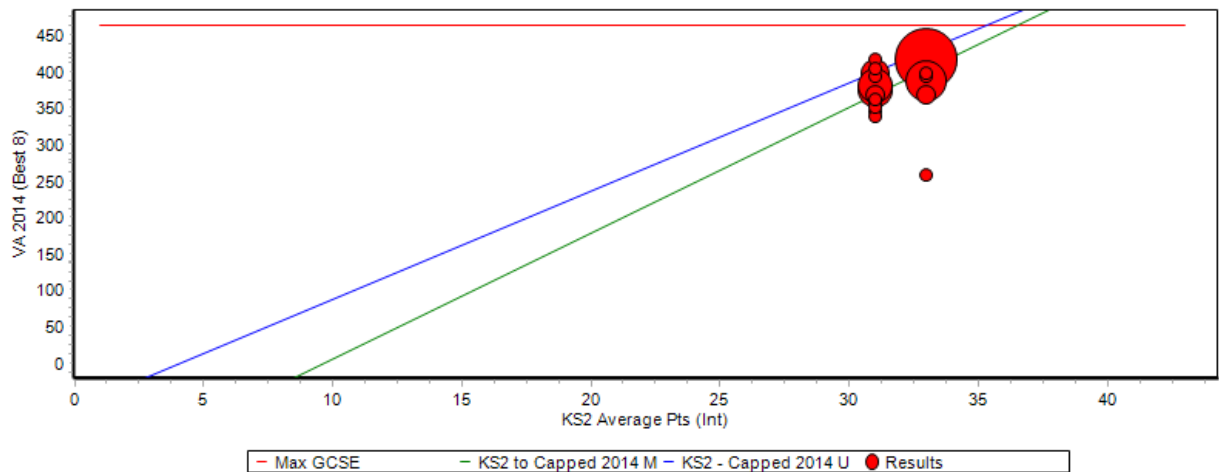
Level 3 on entry



Level 4 on entry

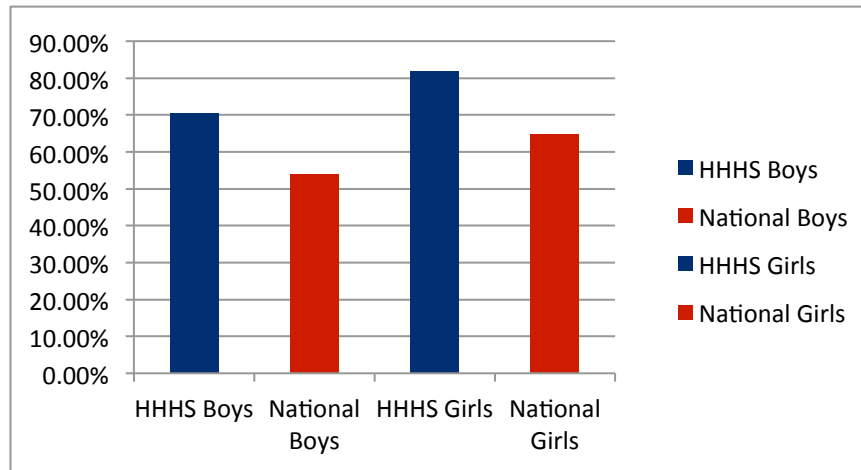


Level 5 on entry



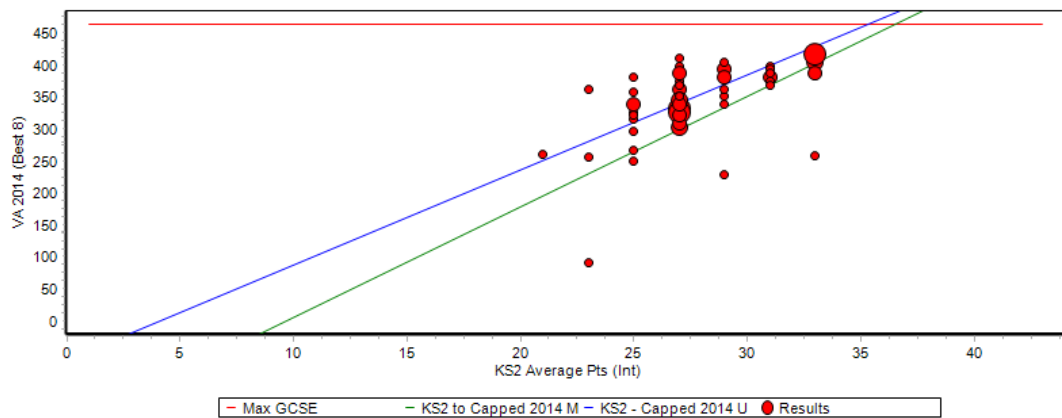
Gender Difference

Whilst there is a gap between the attainment of boys and girls of 10.5% 5A* - C including English and Maths this is similar to the national picture of 10.9%. In addition the attainment of boys and girls is significantly higher than the national average.



Male / Female Results	Male	Female
No. Pupils	78	72
Percentage >= 5A* to C	75.6%	86.1%
Percentage >= 5A* to C inc Eng & Ma	70.5%	81.9%
Percentage making expected progress in English	83.1%	100%
Percentage making expected progress in Maths	74%	86.1%
Percentage > 5A* to G	100%	98.5%

Girls



Boys

