

Summary of Provisional 2013 G.C.S.E. Results



Cohort = 191

Number of girls = 102

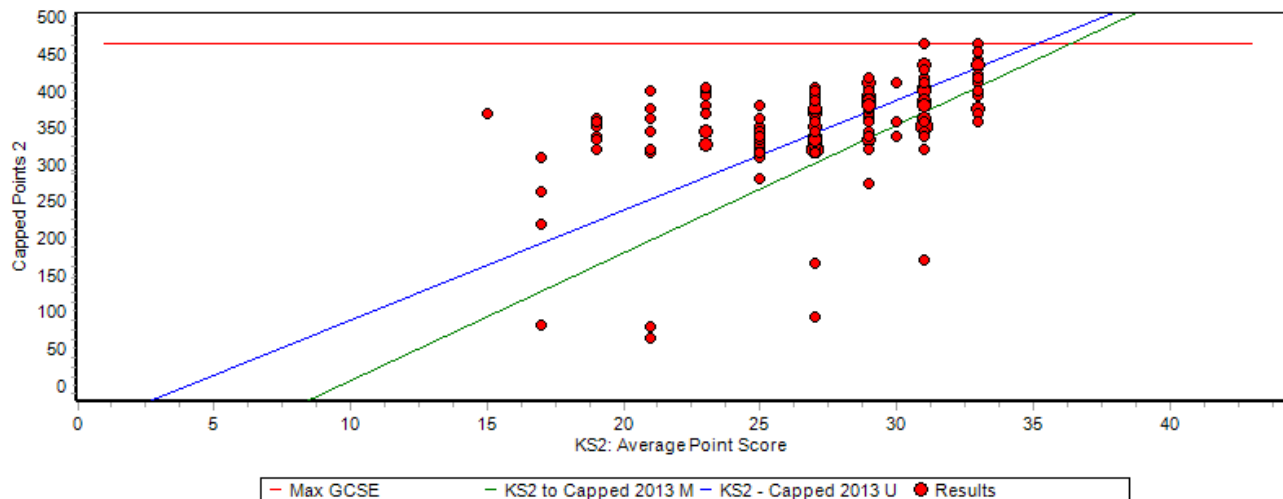
Number of boys = 89

In line with the school policy, all pupils who could be entered for examinations were 191 students



Headline Figures

- **92%** 5 or more GCSE equivalent A* - C passes surpassed the target of 84%
- **74%** achieved 5 or more A*-C passes, including Maths and English, surpassing the target of 61%
- **97%** achieved 5 or more A*-G grades
- **99.5%** achieved 1 A*-C grade.



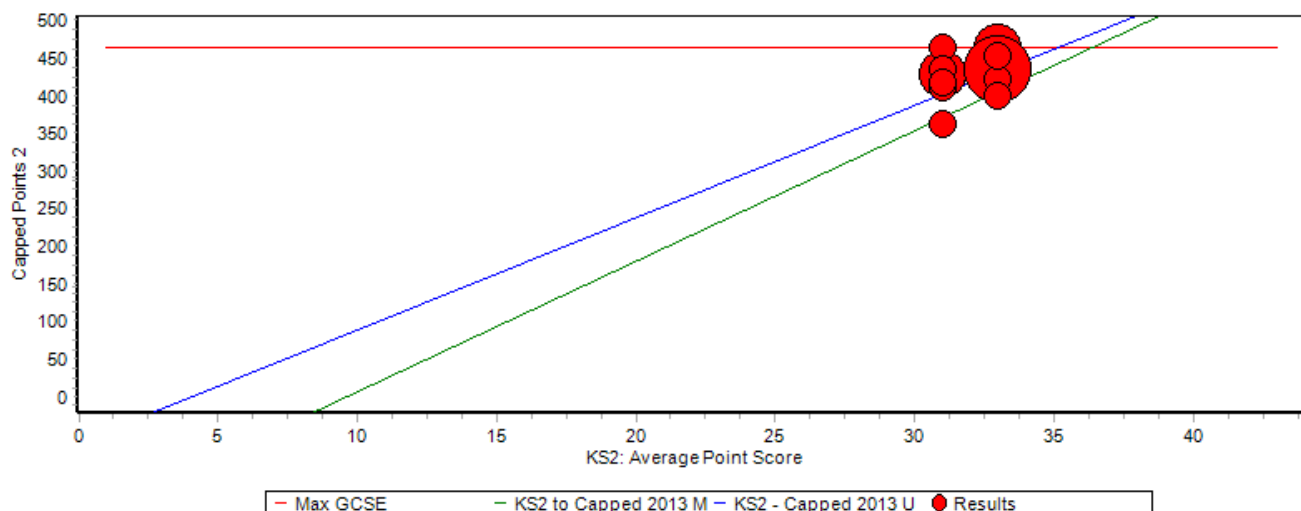
The **green** line shows median progress for all maintained schools and the **blue** shows upper quartile. The **red** line shows maximum possible points from GCSE qualifications.

High Achievement

Once again, higher grade results are extremely pleasing, despite the fact that nationally there was a reduction in the number of A* and A grades being awarded. The proportion getting an A* or an A across the country fell from 22.4% to 21.3%:

	2009	2010	2011	2012	2013
5 A* to A	11.9%	18.5%	27.3%	26.1%	20.4%
3 A* to A	21.1%	35.8%	45.5%	41.6%	37.7%
3 A* to A(GCSE only)	17.5%	23.4%	30.7%	32.3%	27.2%
1 A* to A	48%	52.5%	66.5%	73.9%	69.6%
5 A* to B	38.4%	49.4%	56.8%	69.6%	53.9%
3 A* to B	57.8%	65.4%	79.5%	83.2%	73.8%
1 A* to B	80.2%	84.6%	86.9%	95.0%	92.6%

Able and Talented Cohort



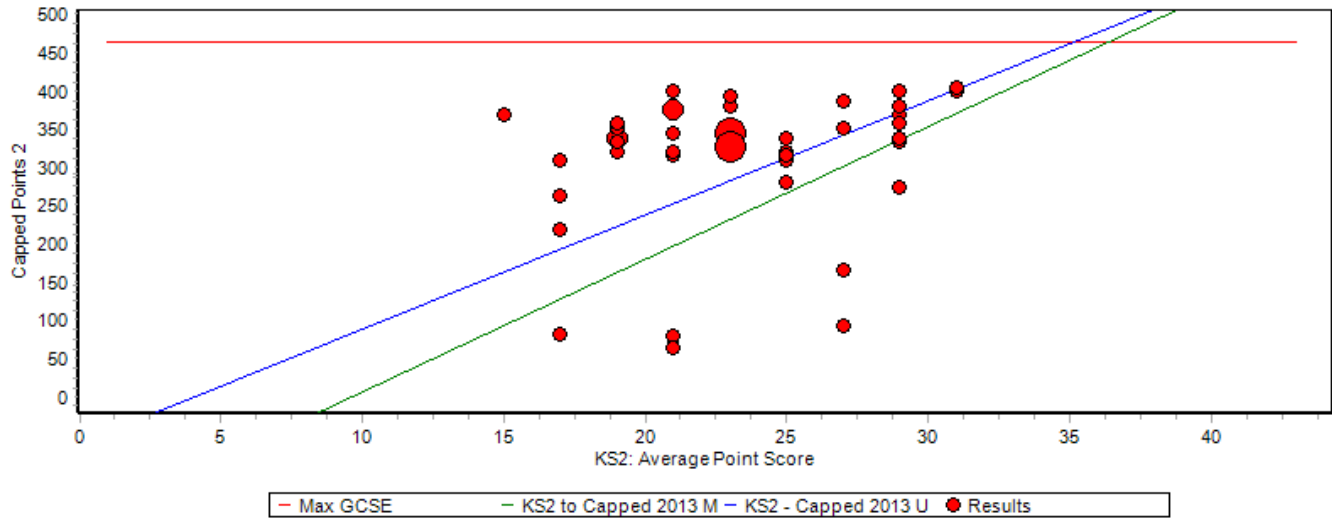
The **green** line shows median progress for all maintained schools and the **blue** shows upper quartile. The **red** line shows maximum possible points from GCSE qualifications.

SEN Students

There were 45 students (24%) on the SEN register compared to 16 (10%) in 2012.

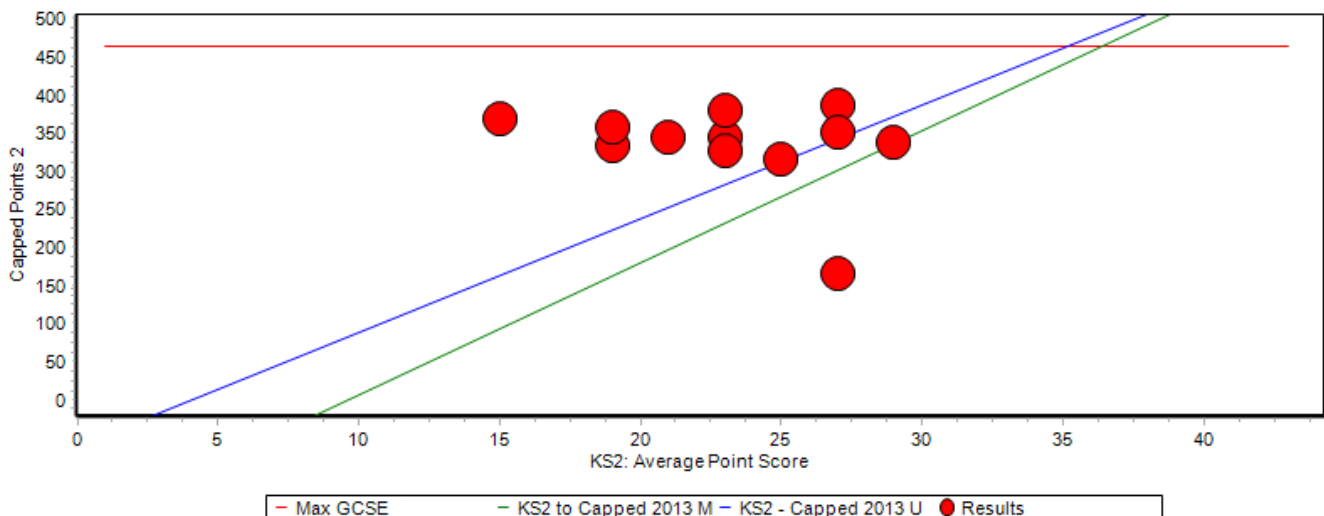
12 of the 45 students (27%) were expected to attain 5A*-C EM

13 of 45 (29%) actually attained 5A*-C EM



The **green** line shows median progress for all maintained schools and the **blue** shows upper quartile. The **red** line shows maximum possible points from GCSE qualifications.

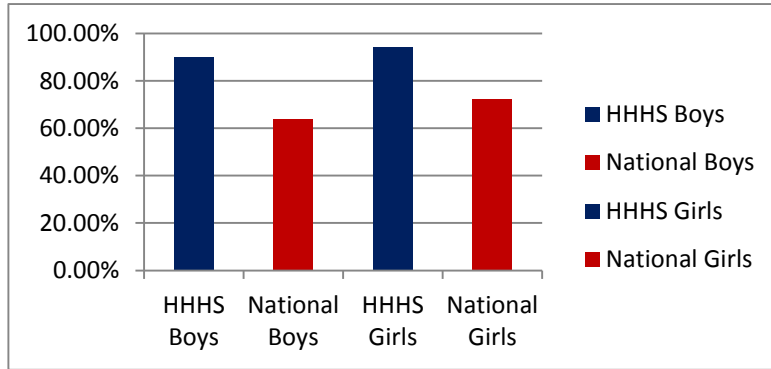
School Action SEN Cohort



The **green** line shows median progress for all maintained schools and the **blue** shows upper quartile. The **red** line shows maximum possible points from GCSE qualifications.

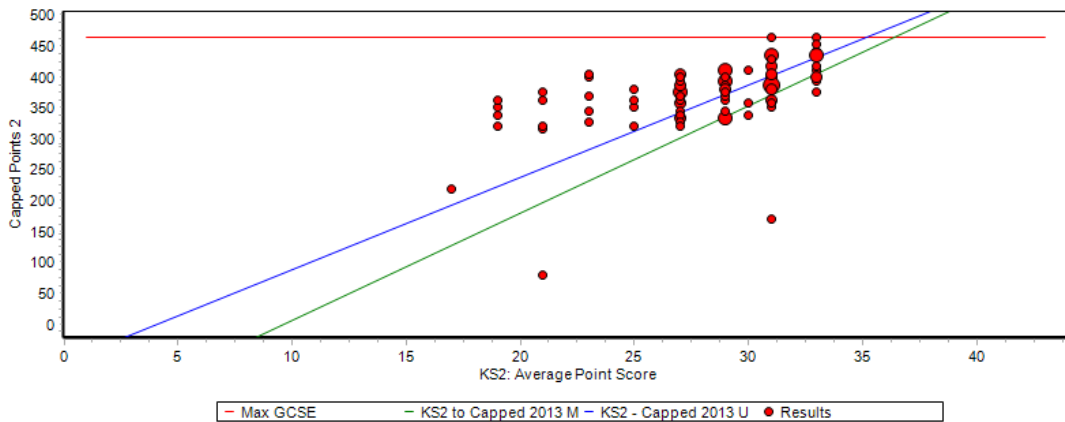
Gender Difference

Whilst there is a gap between the attainment of boys and girls of 4.2% this is good when compared to the national difference of 8.6% 5A* - C. In addition the attainment of boys and girls is significantly higher than the national average.

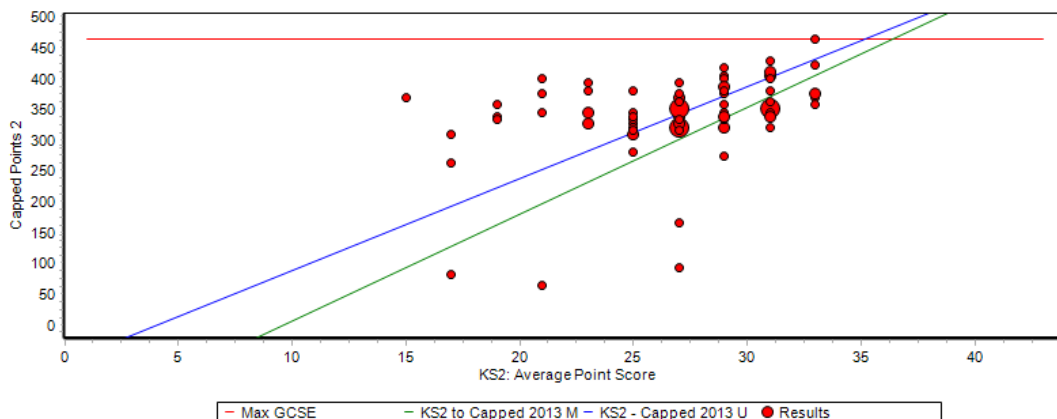


Male / Female Results	Male	Female
No. Pupils	89	102
Percentage \geq 5A* to C	89.9%	94.1%
Percentage \geq 5A* to C inc Eng & Ma	69.5%	78.4%
Percentage \geq 1 A* to C	100%	99%
Percentage $>$ 5A* to G	96.6%	98%

Girls



Boys



The green line shows median progress for all maintained schools and the blue shows upper quartile. The red line shows maximum possible points from GCSE qualifications.